

Battery Revival Document

STEP ONE: Determining if the battery is revivable.

Probe the voltage on the battery connector. Black probe on pin five (first pin on the left), red on pin one (last pin on the right). If it blips, the battery is repairable. If not, the fuse is blown and is not repairable in the scope of this document.

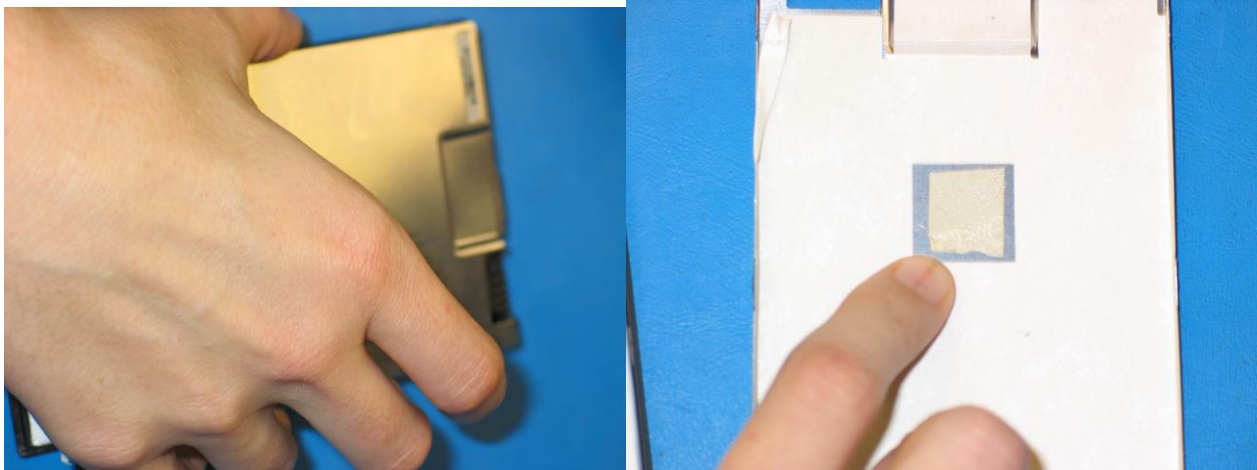


STEP TWO: Disassembling, charging, and then reassembling the battery

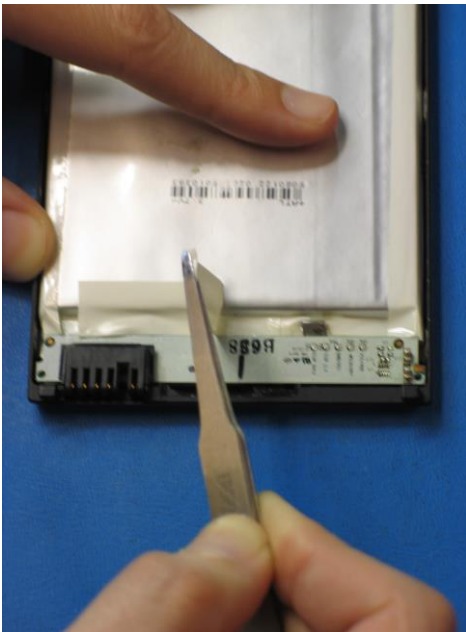
1. Pop the back off the battery. Start loosening the battery cover clips nearest the battery terminal.



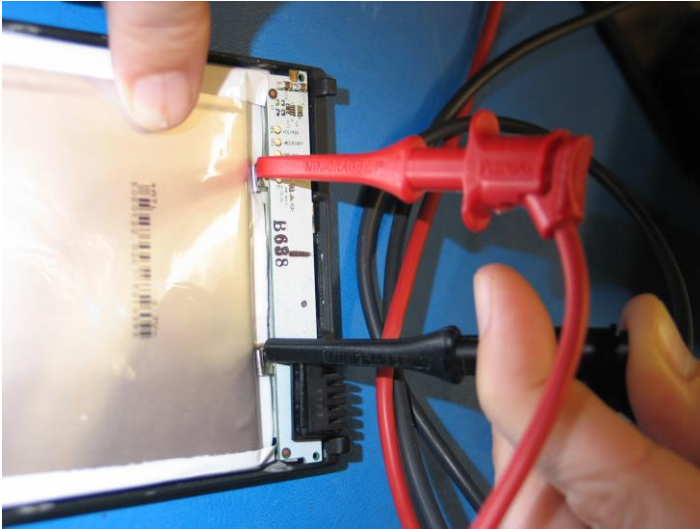
2. Once all the clips are disengaged, loosen the double sided tape that holds the cover to the cell. Lift slowly to avoid damaging cell package.



3. Remove the first layer of white tape over the terminals.



4. Attach charging clips. (black on the -, red on the +. This is printed over the bar code on the cell). Your power supply should be set to 4.2V and the current limit set to 1amp.



5. Charge battery to 3.6v (cell voltage measured at the charging connector should be 3.4v)
6. Remove charging clips from terminals.
7. Reassemble the battery. Remember to put the white tape back over the terminals. Also, put the Nomex shield (white paper insert) in first, and then attach the back cover.

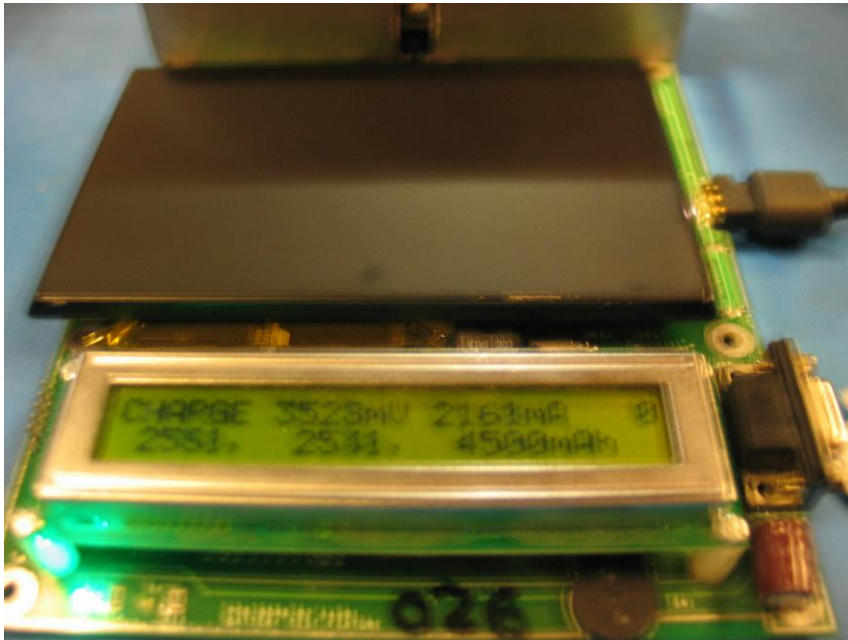
STEP THREE: Programming the battery

1. Set the battery programmer to 4500*. Put the battery on the programmer and let it run through its program until it reaches the screen that has a temperature reading in the upper right hand corner. It should

also read 0mA to the right of the temp reading. If it doesn't, repeat this step again.*



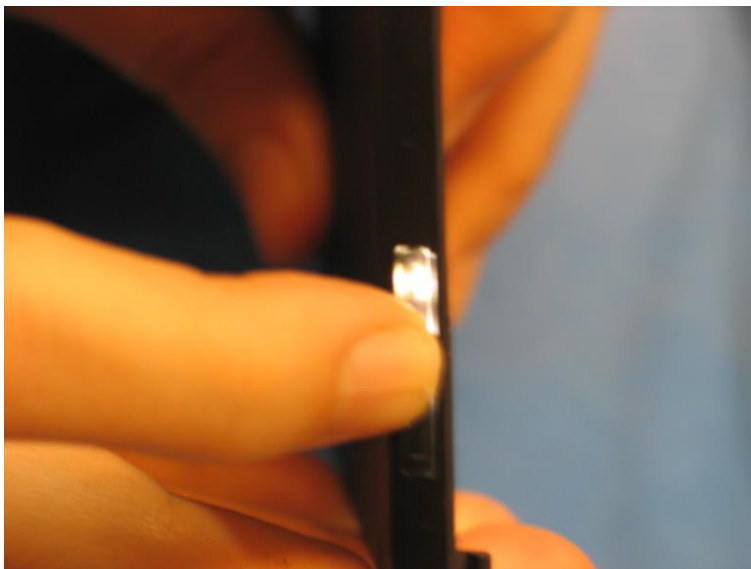
2. Press the wheel in once and then rotate the wheel one step to the right until the screen says CHARGE in the upper left hand corner. Press it again when on the CHARGE screen. Charge the batter and watch the upper right mA reading to make sure it charges to about 2000mA. Once charge has been confirmed, press the wheel again to stop charging.



3. Press the wheel once to put the tester in discharge mode (screen will say DISCH in the upper left of the screen) and then press it once again to begin discharging the battery. Confirm discharge ability by checking the current reading, which should say something around -2000mA



4. When charge counter in lower left hand corner resets to a low number (050 or less, see picture above), press the wheel again to stop discharging. You've now reset the battery to empty.
5. Remove the battery from the tester and hold the battery button down for about 10 seconds until you see a flashing light on the charge indicator. It should only be one flashing light. If there are more, repeat the steps.



STEP FOUR:

Charge the battery in your preferred method.

* If it doesn't work a second time, remove the battery from the tester and set the tester to 4500 mode. Place the battery back on the tester. When the Temperature screen is displayed, press the wheel once and toggle once to the right to get to the charge screen and then charge the battery up to 3.5v. Press the wheel to stop charging and remove the battery from the tester and repeat from step three from the beginning.