

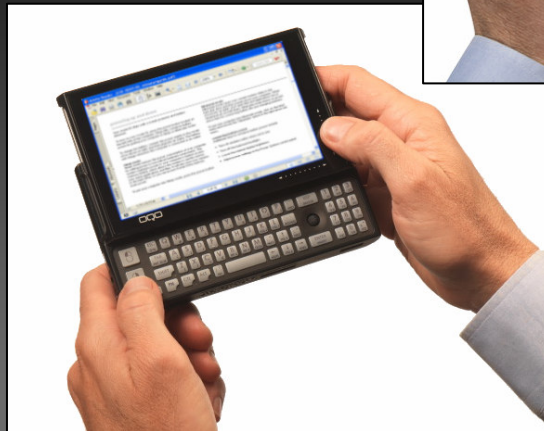
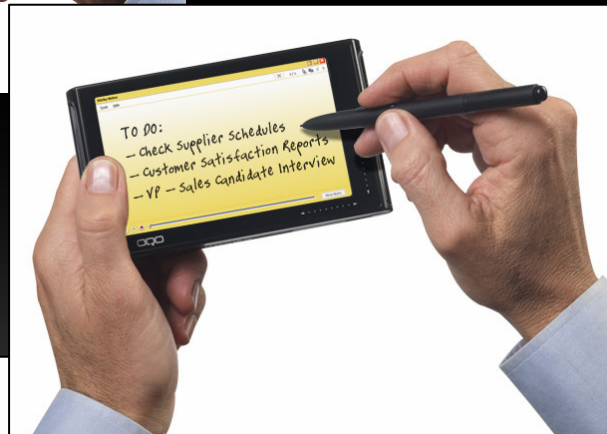


model 02 : tips & tricks

table of contents

1. model 02 navigation
2. model 02 keyboard
3. model 02 ports
4. model 02 wireless features
5. OQO settings manager
6. battery properties and care
7. screen properties and care
8. docking station properties
9. miscellaneous

model 02 navigation



KEYBOARD & TRACKSTICK

- type with thumbs
- left thumb for mouse clicks, zoom keys, and SmartLock keys
- right thumb for track stick and number pad

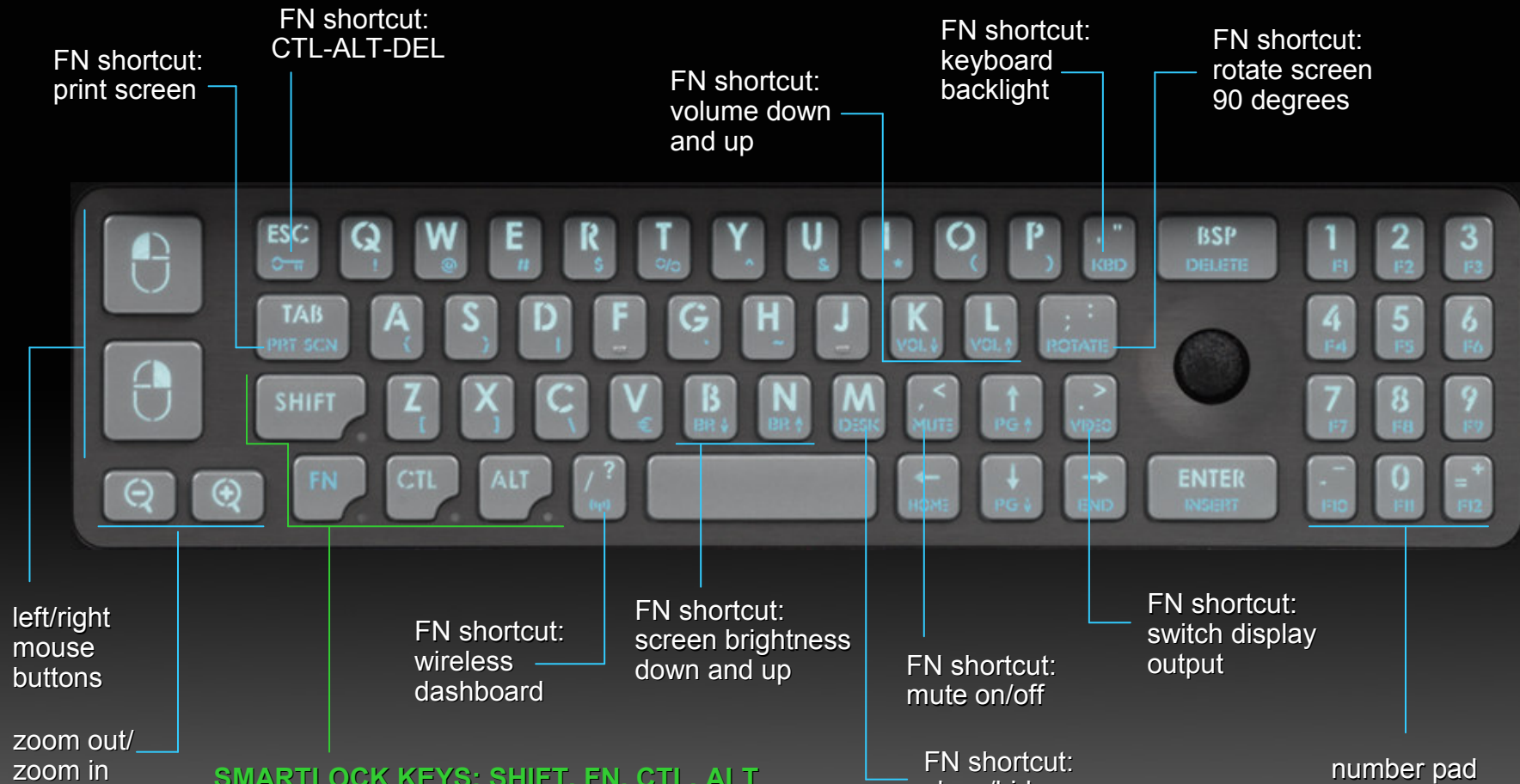
DIGITAL PEN INPUT

- active digitizer in all SKUs
- angle pen perpendicular to screen
- pen button acts as right mouse click
- recalibrate using Pen Tablet applet in control panel

CAPACITIVE TOUCHSCROLLERS™

- scroll in applications such as Internet, Office, Adobe
- continuously scroll by linking horizontal & vertical scrollers without lifting thumb
- adjust sensitivity in OQO settings control panel

model 02 keyboard



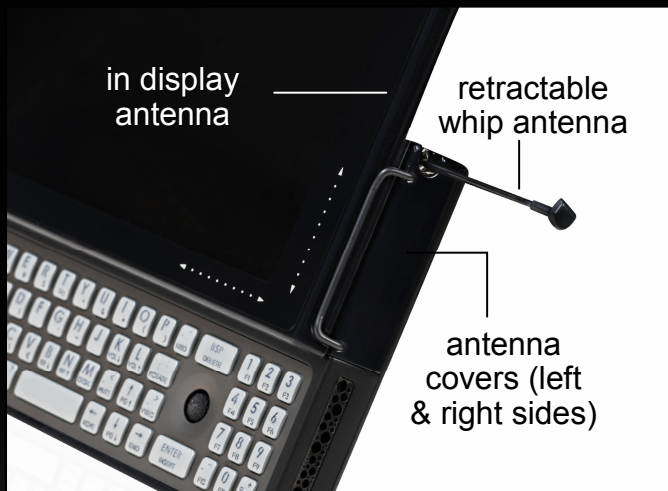
SMARTLOCK KEYS: SHIFT, FN, CTL, ALT

- 1 click of SmartLock key and following keystroke will be modified (green LED pulsates)
- 2 clicks locks SmartLock key and modifies all subsequent keystrokes (solid green LED)
- 3 clicks unlocks SmartLock key (LED off)

model 02 ports



model 02 wireless features



WIFI AND BLUETOOTH (standard)

- Atheros 802.11a/b/g with diversity antennas
- Toshiba Bluetooth 2.0 stack with headset, DUN, AD2P profiles
- 5 WiFi + BT antennas in display and antenna covers

WIRELESS WAN (optional)

- 4 antennas for EV-DO on Sprint or Verizon Wireless networks
- pull out retractable whip antenna for enhanced reception and power savings
- carrier connection managers have auto-connect and other user settings in options



WIRELESS DASHBOARD

- keyboard shortcut: **FN + /**
- power on/off radios (airplane mode)
- access connection managers

OQO settings control panel

PERFORMANCE

- adjusting fan speed changes thermal performance of computer
- “cooler” speeds up the fan
- “quieter” slows down the fan

DROP DETECT

- accelerometer detects free fall and parks hard drive head to prevent damage
- red power button, audio “scream”, and screen corner hazard sign alerts
- enabled by default

TOUCHSCROLLERS™

- change sensitivity and speed of capacitive TouchScrollers
- turn off TouchScrollers to avoid false input (esp. with right handed pen)

TRACK STICK

- adjust sensitivity of track stick

KEYBOARD

- enable key clicks for typewriter sound effects when typing
- disable automatic keyboard backlight (uses ambient light sensor in upper right screen frame)

SUPPORT

- OQO support contact information
- view installed OQO software version numbers and device serial number

battery properties and care

BATTERY CAPACITY

- standard: typical 2-3 hrs, 4500 mAh
- double: standard 4-6 hrs, 9000 mAh

BATTERY STATUS

- press battery gauge on side of battery
- battery gauge lights indicate charge:
 - 4 bars = fully charged
 - 2 bars = half charged
 - blinking light = change/charge battery
- battery gauge lights flash in sequence when charging

CHARGING BATTERY

- battery charges whenever power supply is connected to computer and AC outlet
- airplane/car adapter available as accessory for in-flight and on the road charging
- battery charging adapter available as accessory for standalone battery charging with power supply

CHANGING BATTERY

- connect computer to power supply and plug into AC outlet, or
- put computer in hibernate mode (start menu -> shut down -> hibernate), or
- shut down computer

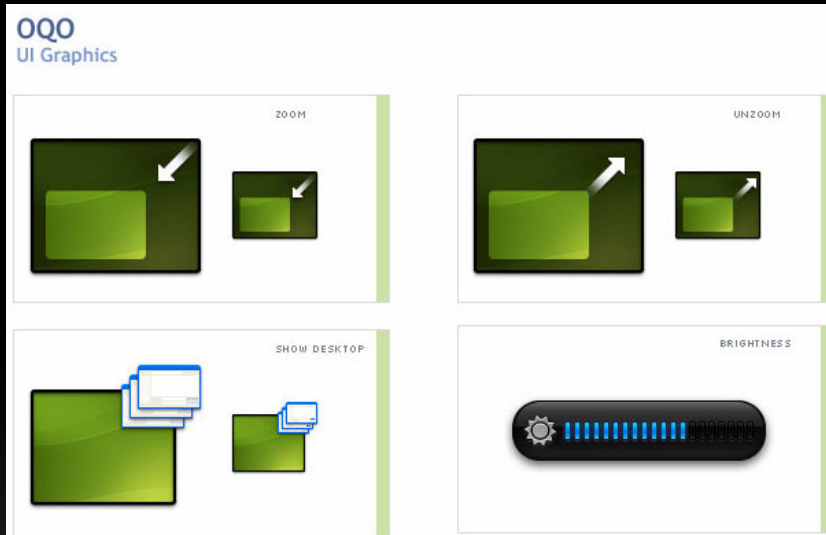
REMOVING AND ATTACHING BATTERY

- to remove: press battery release button and lift battery away from computer
- to attach: align battery hooks into slots alongside computer edge and lower battery

CONSERVING CHARGE

- put computer in standby when idle (press power button or enable automatic standby in power options control panel)
- disable wireless radios in wireless dashboard
- extend whip antenna when using WWAN
- lower screen brightness **FN + BR ↓**
- turn off keyboard backlight **FN + KBD**

screen properties and care



MAGNIFICATION

- zoom '+' magnifies 1.5X, 2X, 2.5X, or 4X
 - pan by moving cursor towards edge of desired direction
- zoom '-' interpolates 1000x600 and 1200x720 resolutions

SCREEN SETTINGS

- show/hide desktop: **FN + DESK**
- adjust screen brightness: **FN + BR** ↓ or ↑
- rotate screen 90 degrees: **FN + ROTATE**



executive case



stronghold case

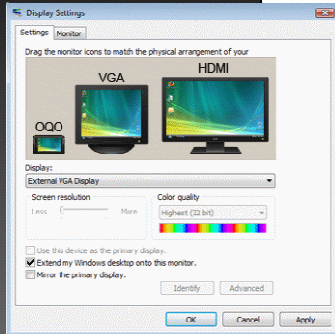
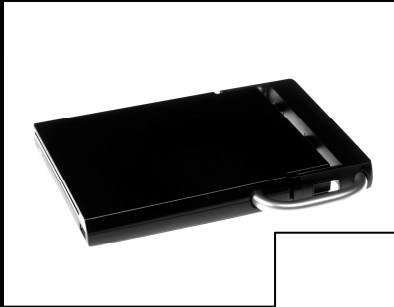


belt clip case

SCREEN CARE

- use screen protector (pre-installed)
- carry in a case (belt clip, executive or stronghold metal cases available)

docking station properties



CD OR DVD BURNER

- disc eject button located in front left corner
- ships with Roxio CD/DVD authoring software
- requires power from power supply + AC outlet or airplane/car adapter

PORTS

- HDMI/DVI video out (HDMI-DVI adapter included in box) and VGA analog video out
- Ethernet 10/100 Base-T
- 3.5mm audio jack
- power connector
- 1 front + 2 back USB 2.0 ports

EXTERNAL DISPLAYS

- use up to 2 external 1920x1200 displays in extended desktop mode (Display Properties)
- automatic recall and sensing of display settings with DisplaySense technology
- manual video switching with **FN + VIDEO**

miscellaneous

GENERAL CARE

- make sure model 02 is in standby, hibernate, or shutdown before placing in bag, briefcase, or purse
- keep vents clear for maximum air flow and cooling
- don't obstruct antenna covers for best wireless performance
- be gentle when pulling out/pushing in retractable whip antenna; put away when not in use

OQO CANDY

- click on OQO candy icon on desktop for special online offers from our partners

MISC. KEYBOARD SHORTCUTS

- **CTL-ESC**: launches Windows Start Menu
- **CTL-A**: select all items
- **CTL-C**: copy item
- **CTL-V**: paste item
- **CTL-S**: save
- **CTL-P**: print
- **CTL-F4**: closes active window
- **ALT-F4**: exits program
- **ALT-TAB**: switch applications
- **F11**: full screen Internet browsing
- **CTL + F1**: minimize Office 2007 ribbon